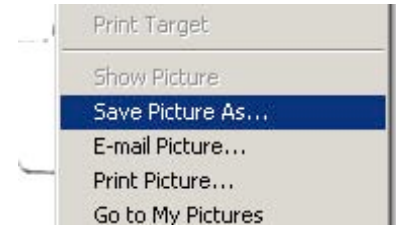
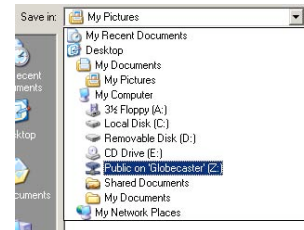


Guide to Saving Pictures to the Still Store

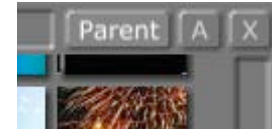
1. Using the Research computer, find the picture you wish to do. Right click on the picture and choose “Save Picture As”



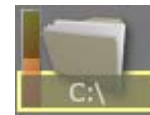
2. In the “Save In:” dropdown, choose drive Z. Click Save.



3. On the Globecaster, the parent button in the upper right repeatedly. Eventually you will get to a screen that lists all of the drives on the system, as shown in the step below.



4. Double click on C:\.



5. Double click on Public.



6. Inside the public folder, you should see the image you saved earlier. You may now double click on it to load it, and use it just like any other picture on the still store.