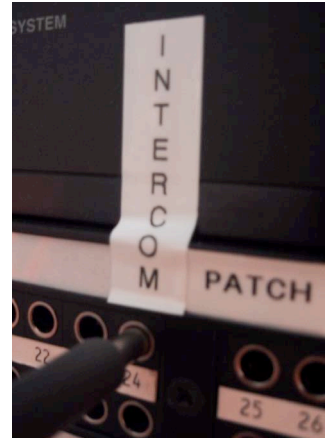
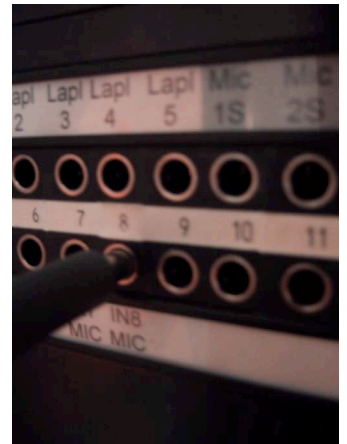


Guide to Monitoring Intercom through Mixing Console

1. Insert a patch cord in the top row of the top patch bay, in the plug labeled “Intercom.”



2. Insert the other end of the patch cord in one of the microphone inputs in the next row. As an alternative, you may use a line level input.



3. Fade up the appropriate channel on the audio console, just like you would with a microphone.