

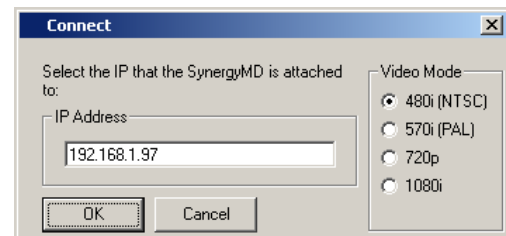
Guide to Uploading Images to the Synergy 2 Switcher

The Synergy 2 switcher can display Targa (TGA) images that have been copied to it from the Research computer. For more information or help preparing your images, ask a studio staff member.

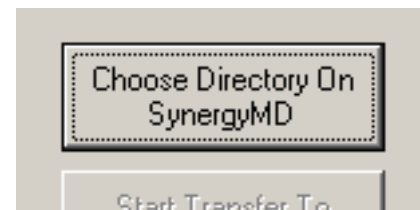
1. Drag your image onto the icon labelled “Resize for Ross.” This will launch Photoshop and apply the appropriate changes to make the image compatible with the switcher. When it is finished, quit photoshop and doubleclick the “ImageMover” icon.



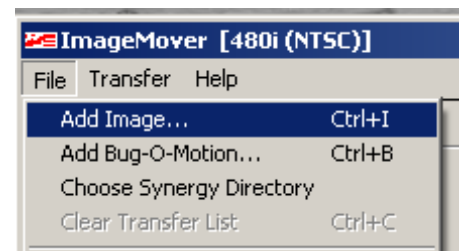
2. You will be brought to a Connect window. The default settings should match the window at the right. Press the OK button to continue.



3. Press the “Choose Directory On Synergy MD” button. The default directory is fine – Press the OK button.



4. Select File from the top of the screen and chose “Add Image.” Navigate to your TGA file and select it. It should be in c:\program files\ImageMover.



5. Assuming your picture is displayed correctly on the right side of the window, press the “Start Transfer to Synergy MD” button. Depending on your image, it may take a few seconds to copy. Once the transfer is complete, you can follow the steps in the related tutorial, “Guide to Displaying a Still Image on the Synergy 2 Switcher.”

